



Company : Beach Petroleum Ltd

Well : Fermat-1

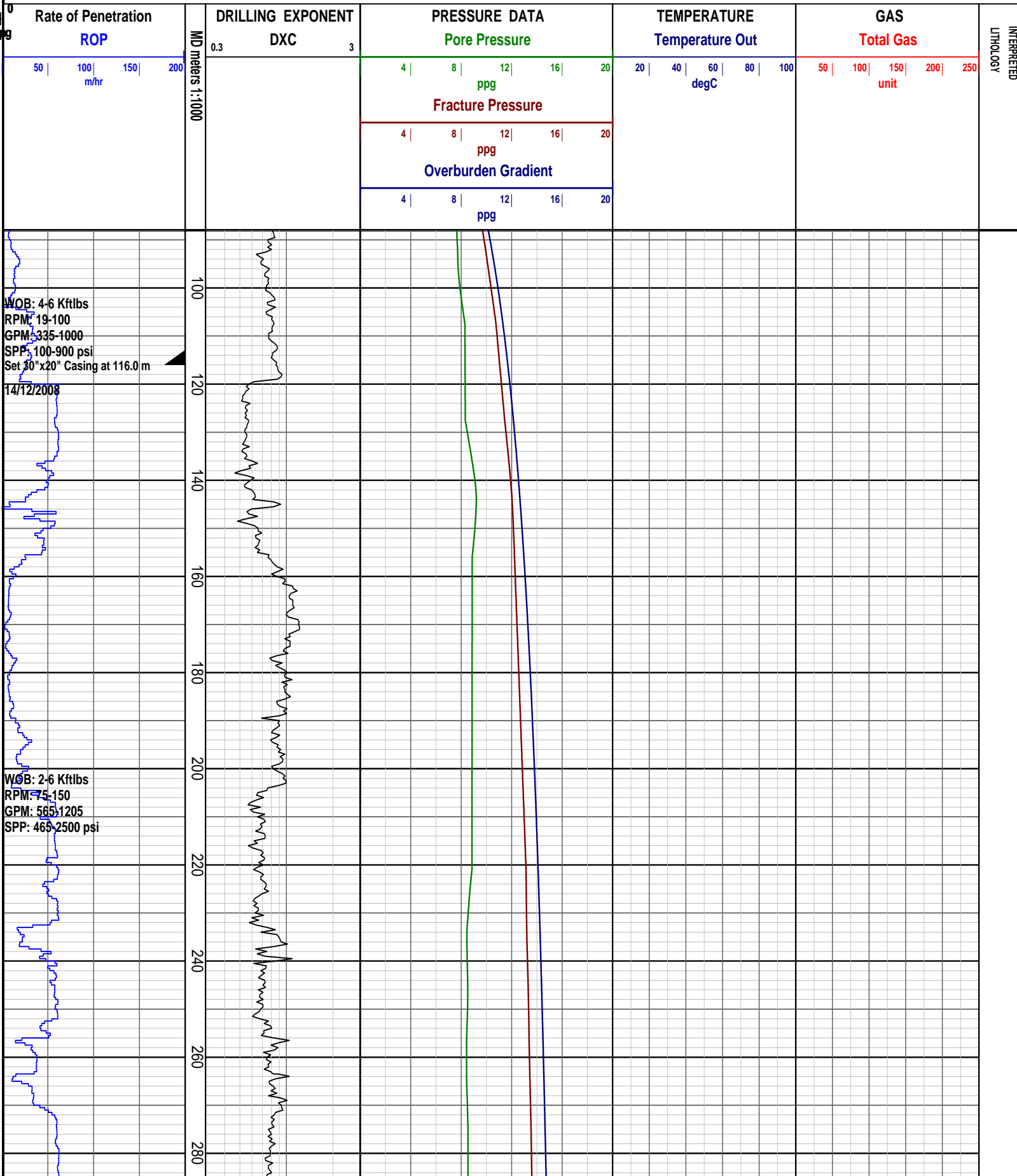
Interval : 88.00 - 3458.90 meters

Created : 06/Jan/2009 6:48:39 AM



INTEQ

PRESSURE DATA PLOT

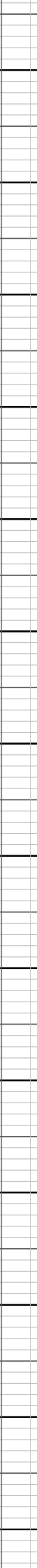
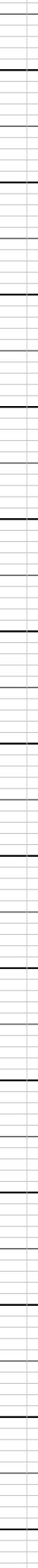
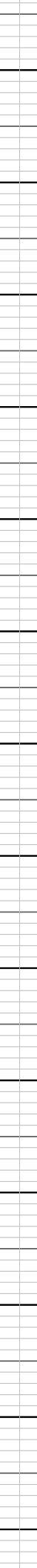


WOB: 2-10 Kftlbs
RPM: 60-150
GPM: 415-1200
SPP: 2480-2500 psi

WOB: 2-14 Kftlbs
RPM: 122-440
GPM: 1111-1205
SPP: 2530-2560 psi

WOB: 3-25 Kftlbs
RPM: 99-160
GPM: 1065-1210
SPP: 2580-2600 psi

300
320
340
360
380
400
420
440
460
480
500
520
540
560

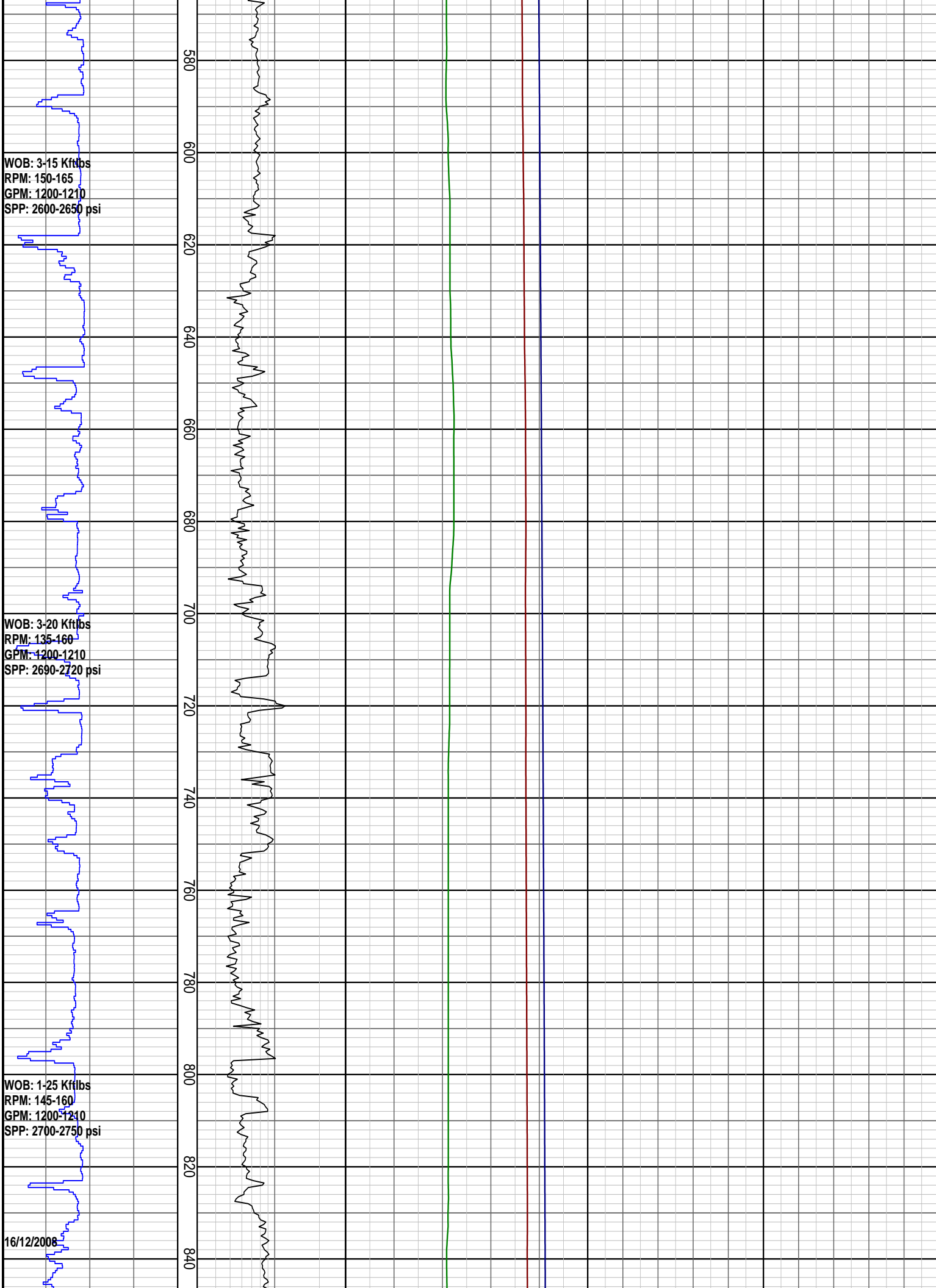


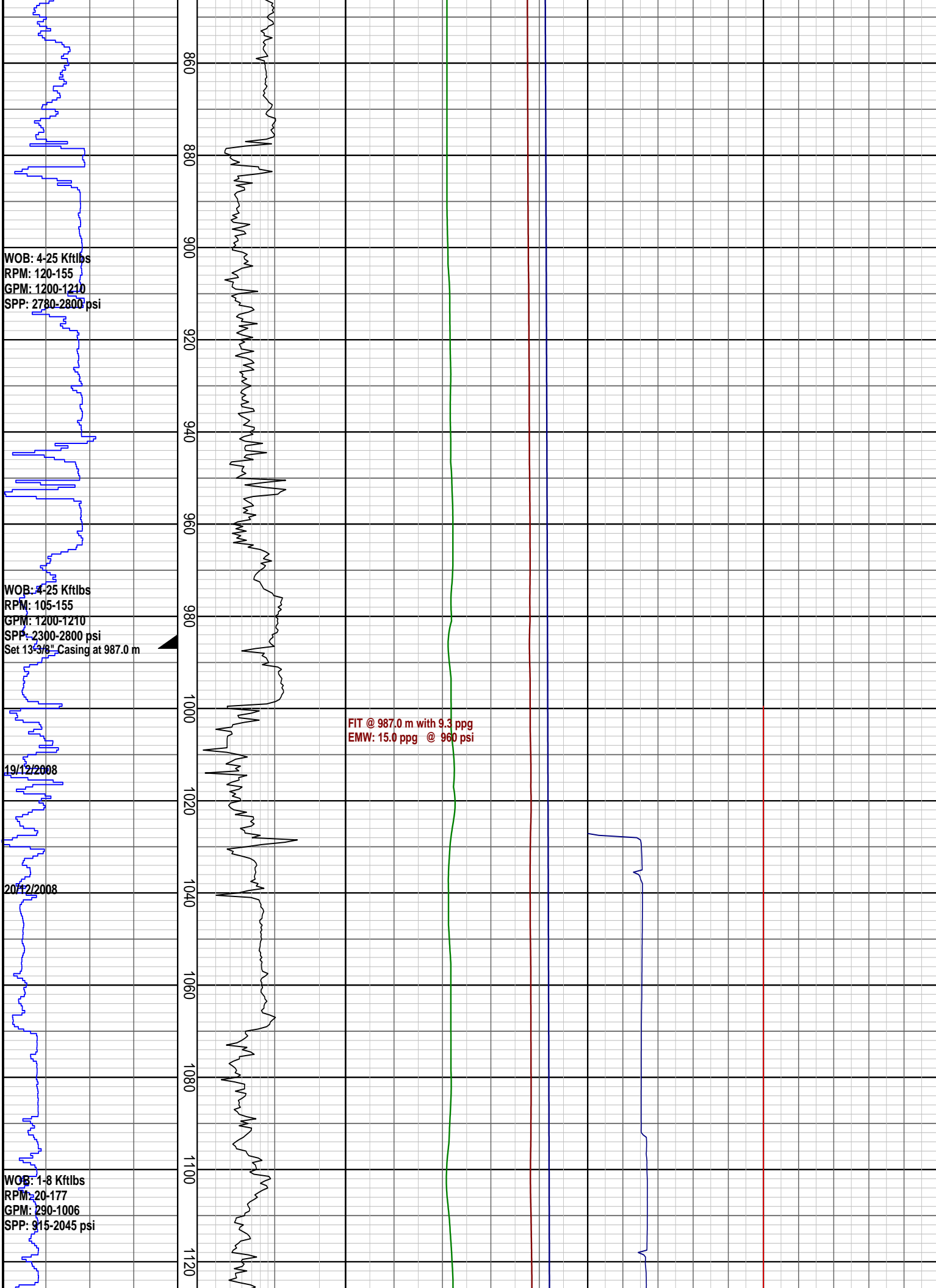
WOB: 3-15 Kftlbs
RPM: 150-165
GPM: 1200-1210
SPP: 2600-2650 psi

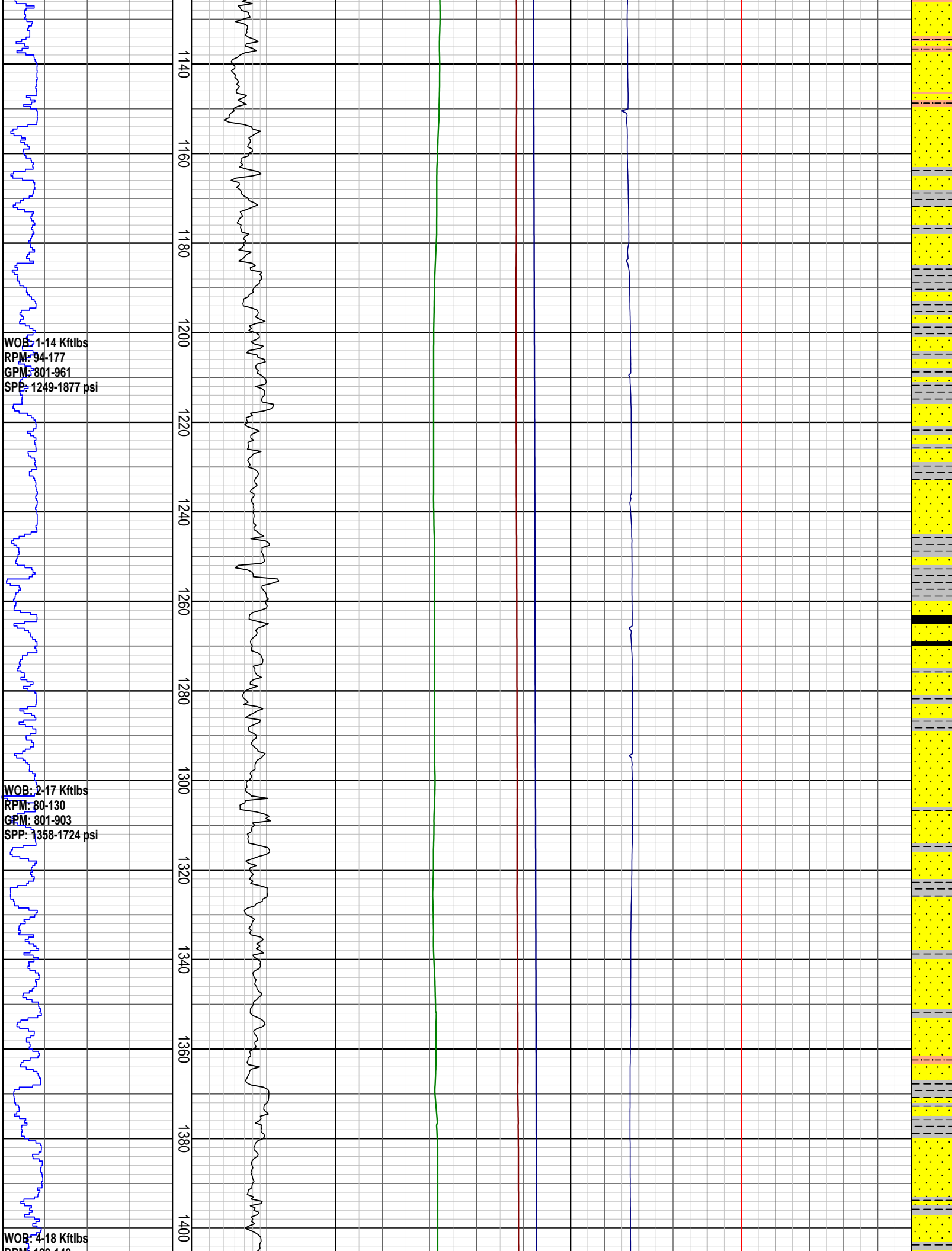
WOB: 3-20 Kftlbs
RPM: 135-160
GPM: 1200-1210
SPP: 2690-2720 psi

WOB: 1-25 Kftlbs
RPM: 145-160
GPM: 1200-1210
SPP: 2700-2750 psi

16/12/2008







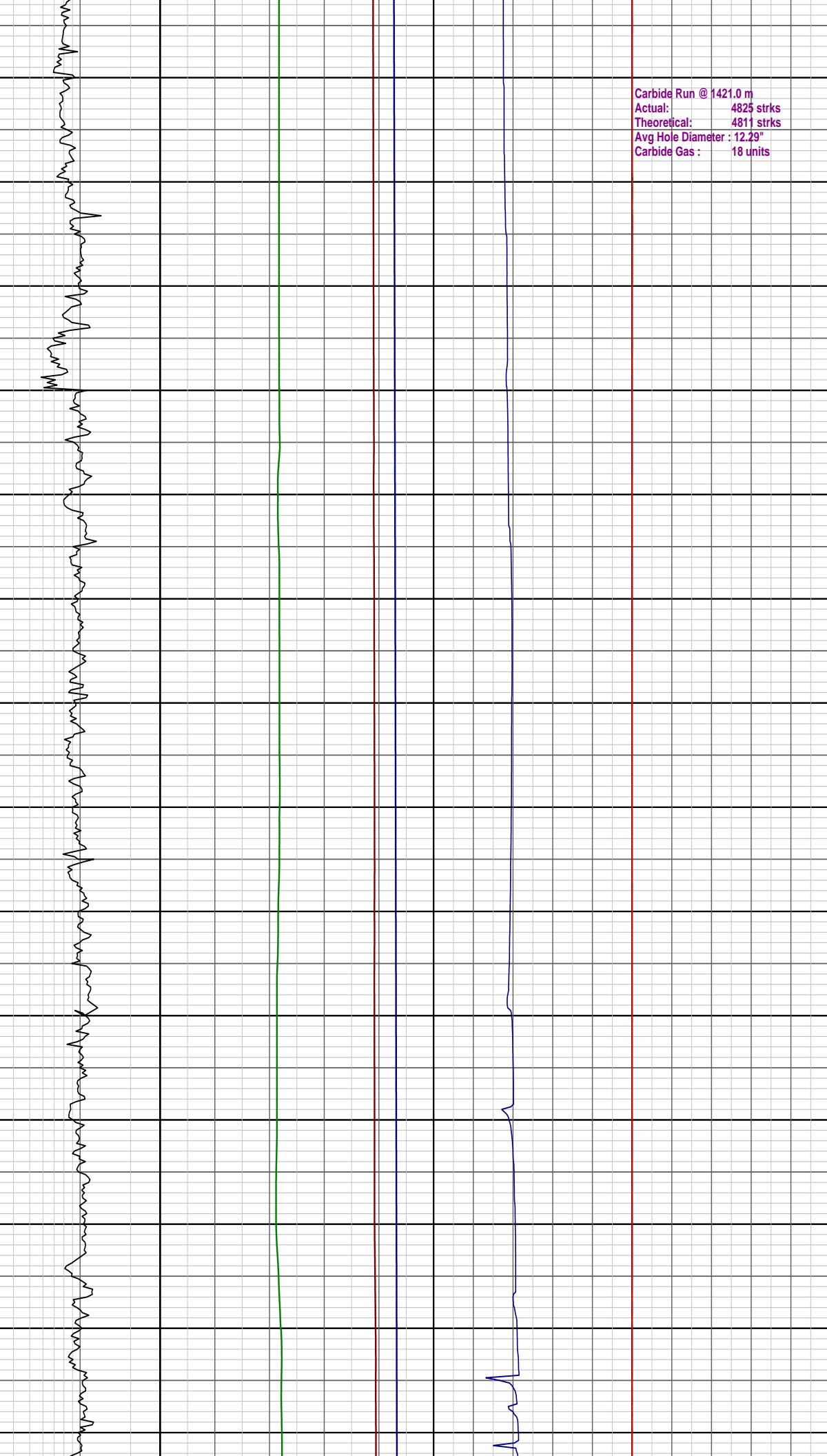
RPM: 120-148
GPM: 798-807
SPP: 1445-1500 psi

2/11/2/2008

WOB: 1-18 Kftlbs
RPM: 98-148
GPM: 800-925
SPP: 1470-1950 psi

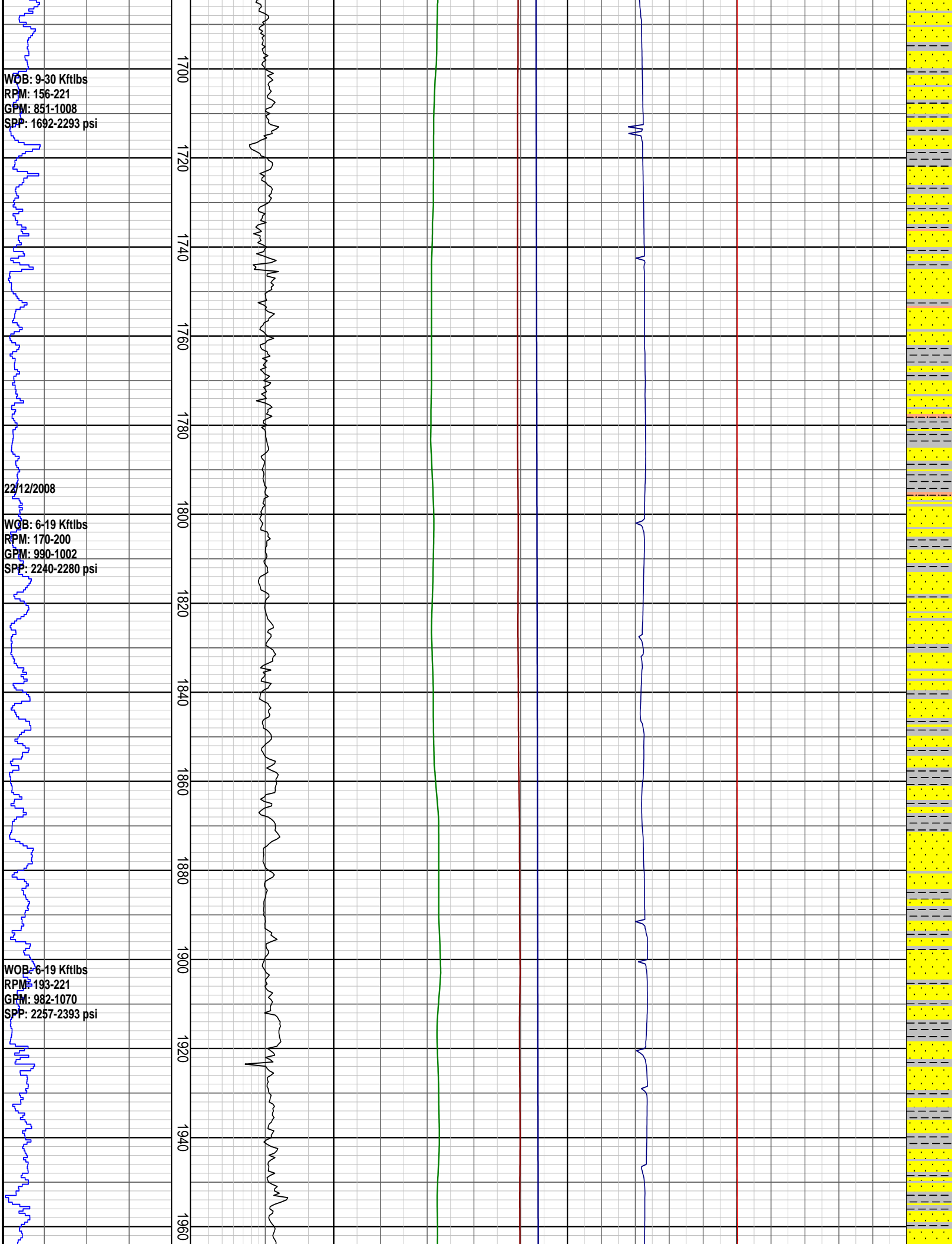
WOB: 9-26 Kftlbs
RPM: 117-170
GPM: 803-1008
SPP: 1437-2267 psi

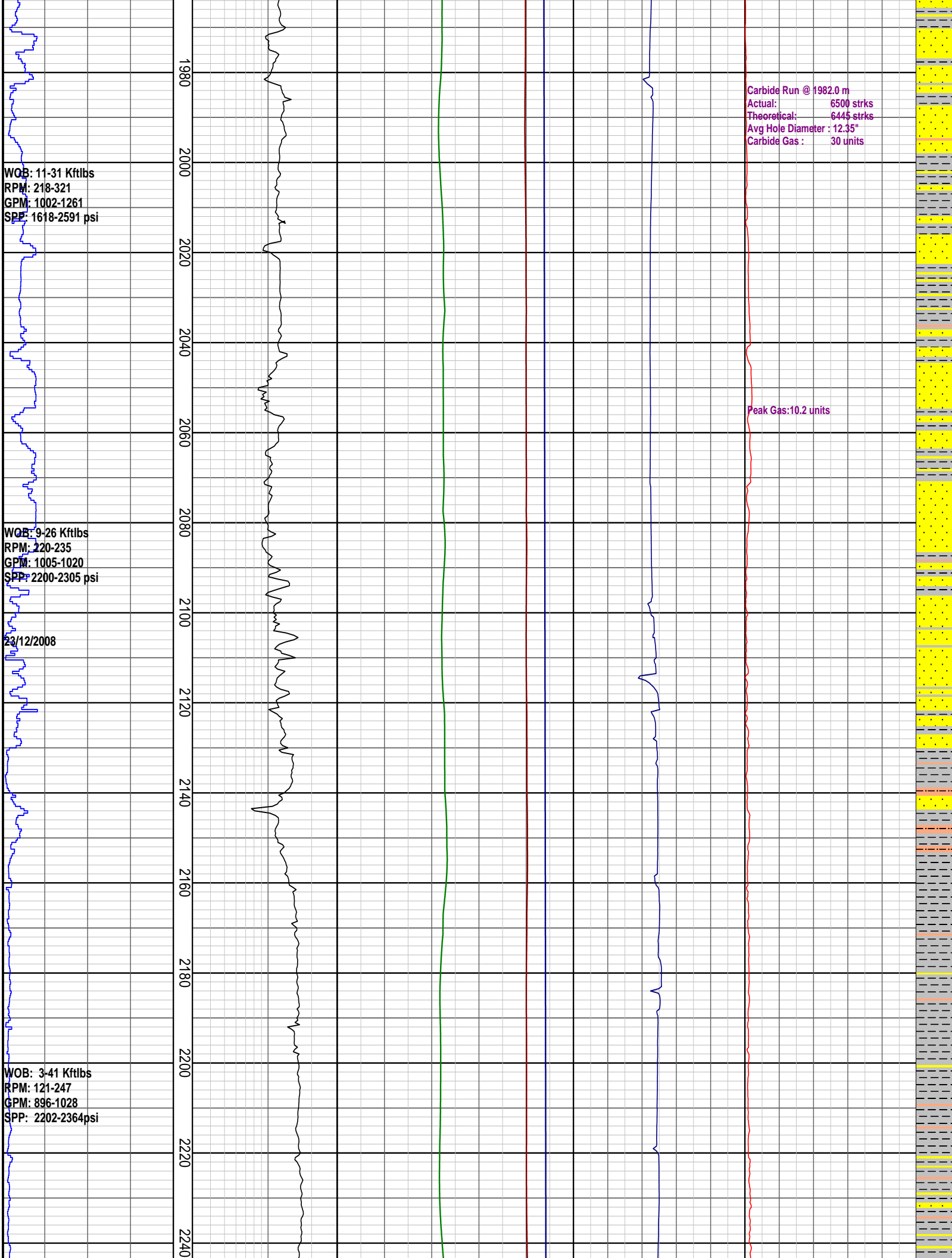
1420
1440
1460
1480
1500
1520
1540
1560
1580
1600
1620
1640
1660
1680



Carbide Run @ 1421.0 m
Actual: 4825 strks
Theoretical: 4811 strks
Avg Hole Diameter : 12.29"
Carbide Gas : 18 units







WOB: 11-31 Kftlbs
RPM: 218-321
GPM: 1002-1261
SPP: 1618-2591 psi

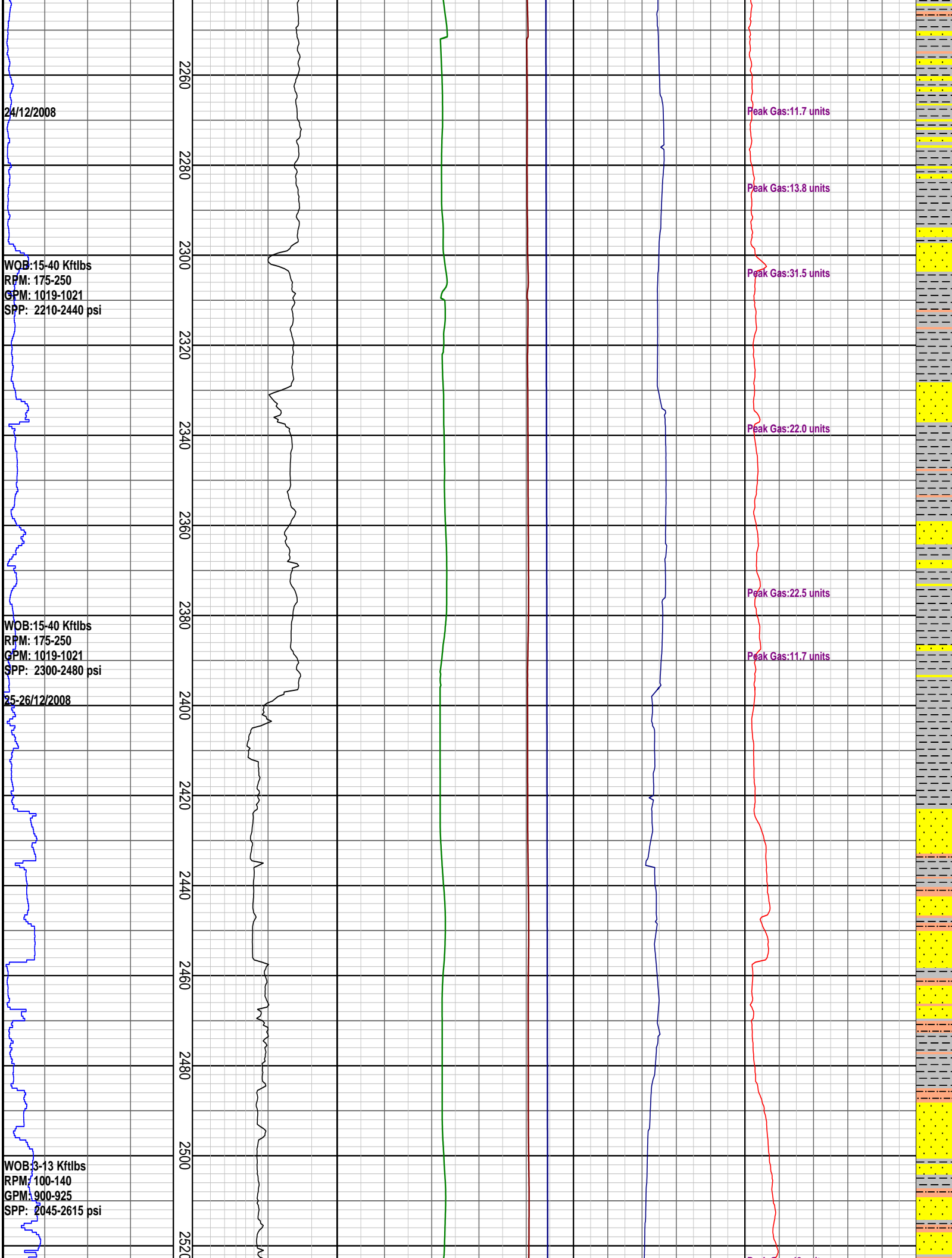
WOB: 9-26 Kftlbs
RPM: 220-235
GPM: 1005-1020
SPP: 2200-2305 psi

23/12/2008

WOB: 3-41 Kftlbs
RPM: 121-247
GPM: 896-1028
SPP: 2202-2364psi

Carbide Run @ 1982.0 m
Actual: 6500 strks
Theoretical: 6445 strks
Avg Hole Diameter : 12.35"
Carbide Gas : 30 units

Peak Gas:10.2 units



24/12/2008

WOB: 15-40 Kftlbs
RPM: 175-250
GPM: 1019-1021
SPP: 2210-2440 psi

WOB: 15-40 Kftlbs
RPM: 175-250
GPM: 1019-1021
SPP: 2300-2480 psi

25-26/12/2008

WOB: 3-13 Kftlbs
RPM: 100-140
GPM: 900-925
SPP: 2045-2615 psi

Peak Gas: 11.7 units

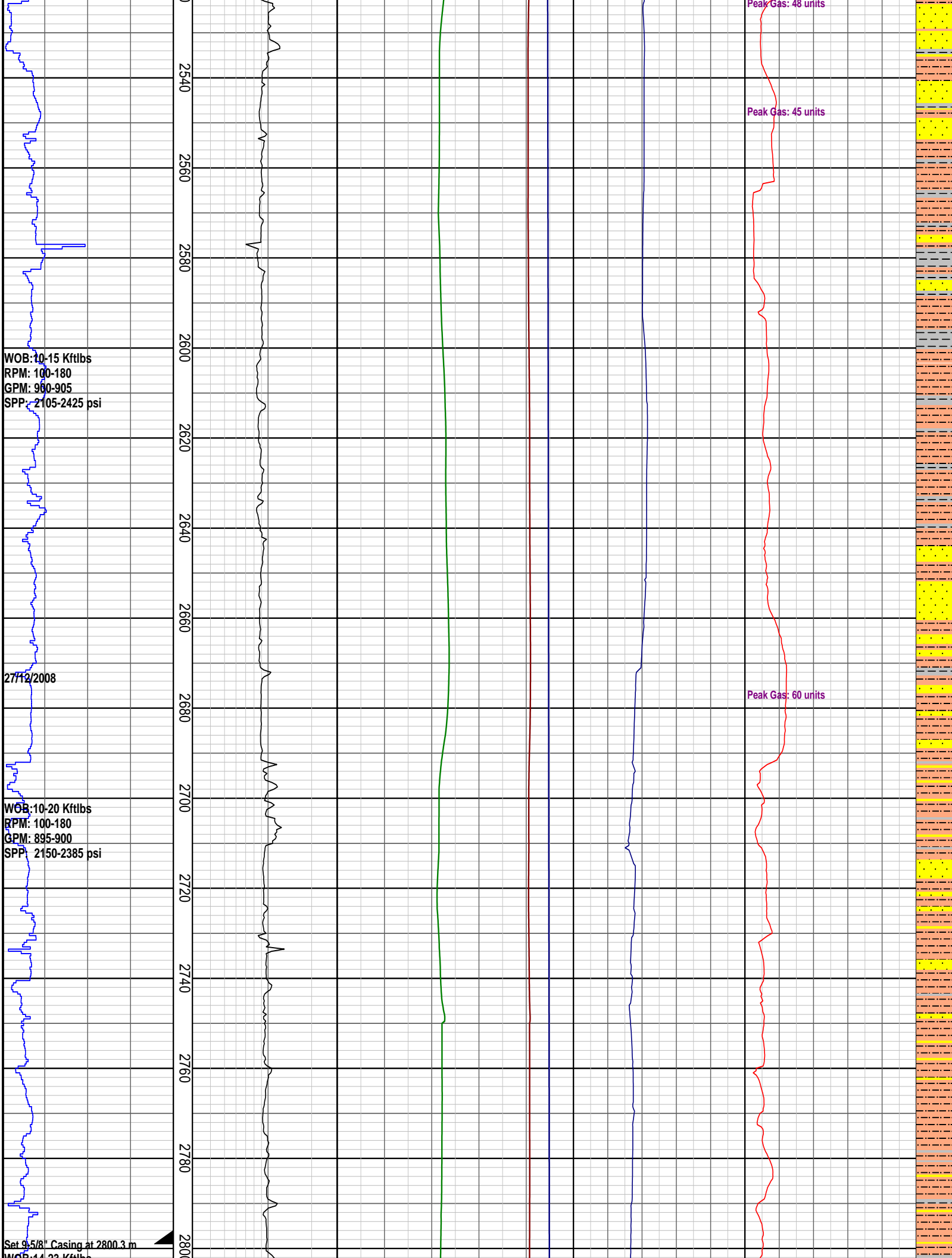
Peak Gas: 13.8 units

Peak Gas: 31.5 units

Peak Gas: 22.0 units

Peak Gas: 22.5 units

Peak Gas: 11.7 units

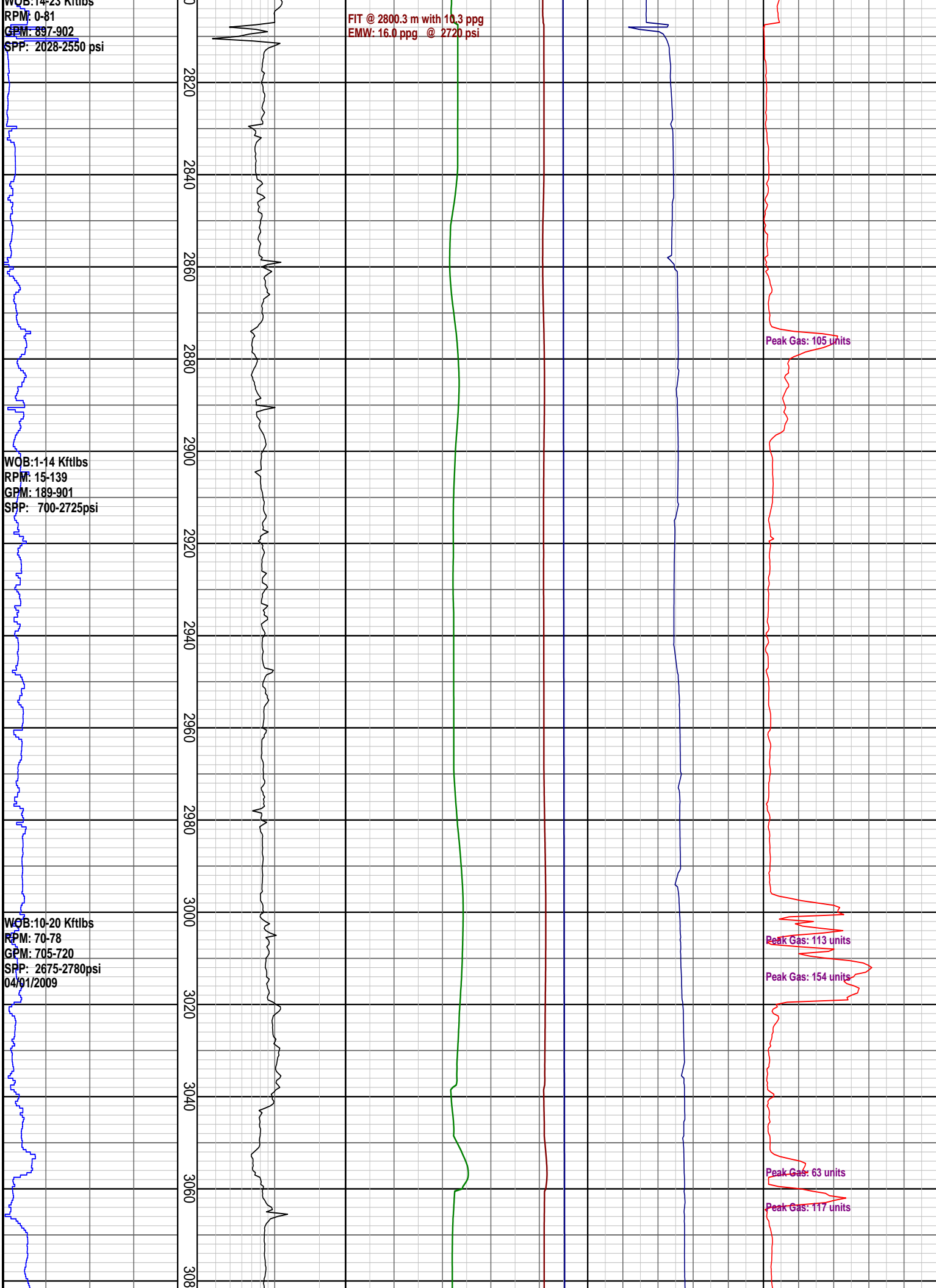


WOB: 14-23 Kftlbs
RPM: 0-81
GPM: 897-902
SPP: 2028-2550 psi

FIT @ 2800.3 m with 10.3 ppg
EMW: 16.0 ppg @ 2720 psi

WOB: 1-14 Kftlbs
RPM: 15-139
GPM: 189-901
SPP: 700-2725psi

WOB: 10-20 Kftlbs
RPM: 70-78
GPM: 705-720
SPP: 2675-2780psi
04/01/2009



Peak Gas: 105 units

Peak Gas: 113 units

Peak Gas: 154 units

Peak Gas: 63 units

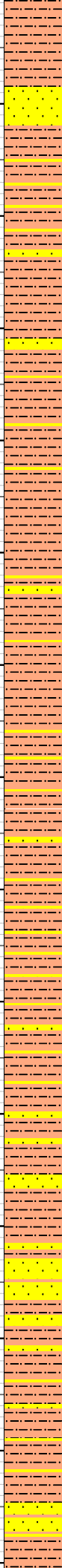
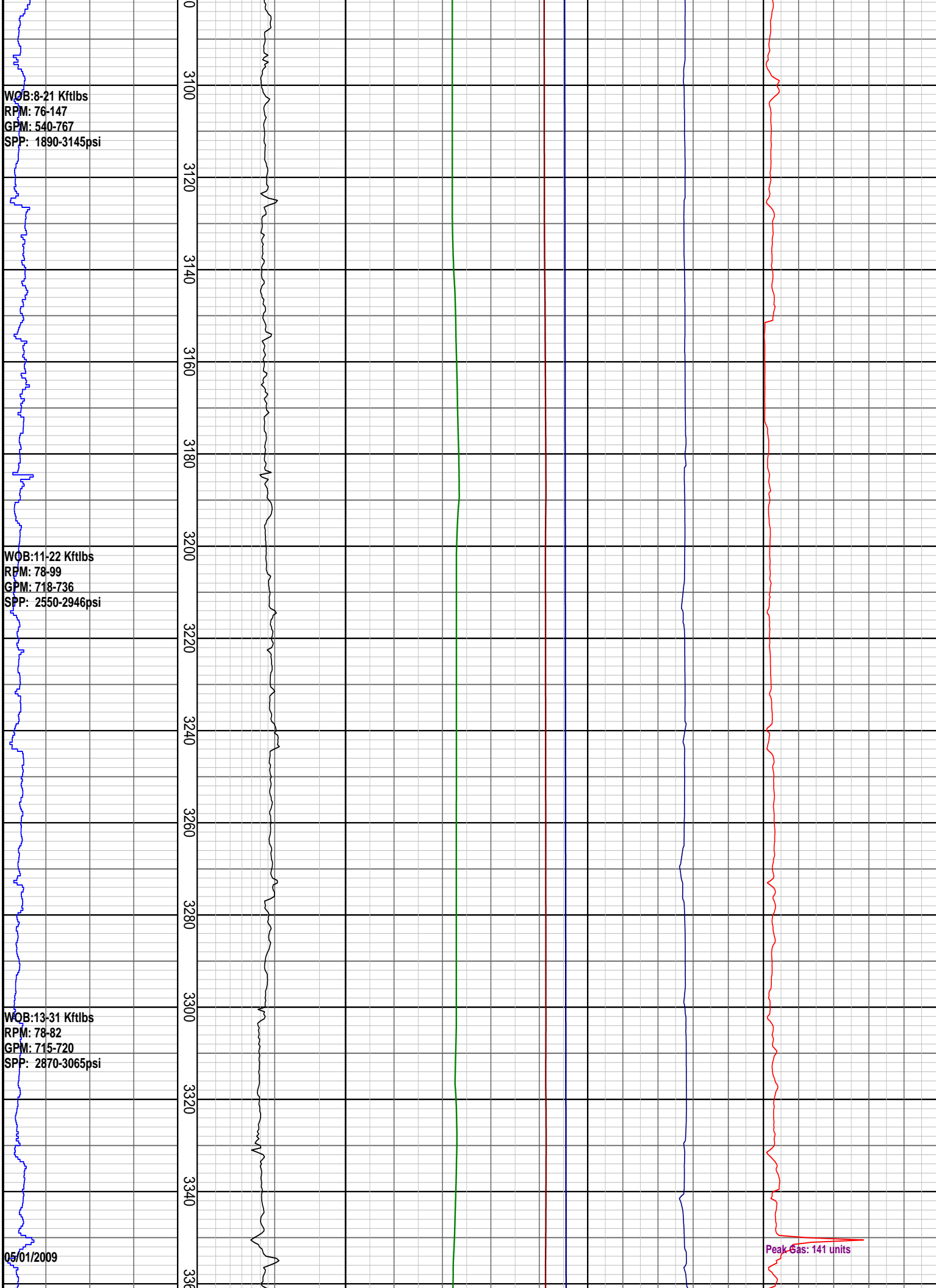
Peak Gas: 117 units

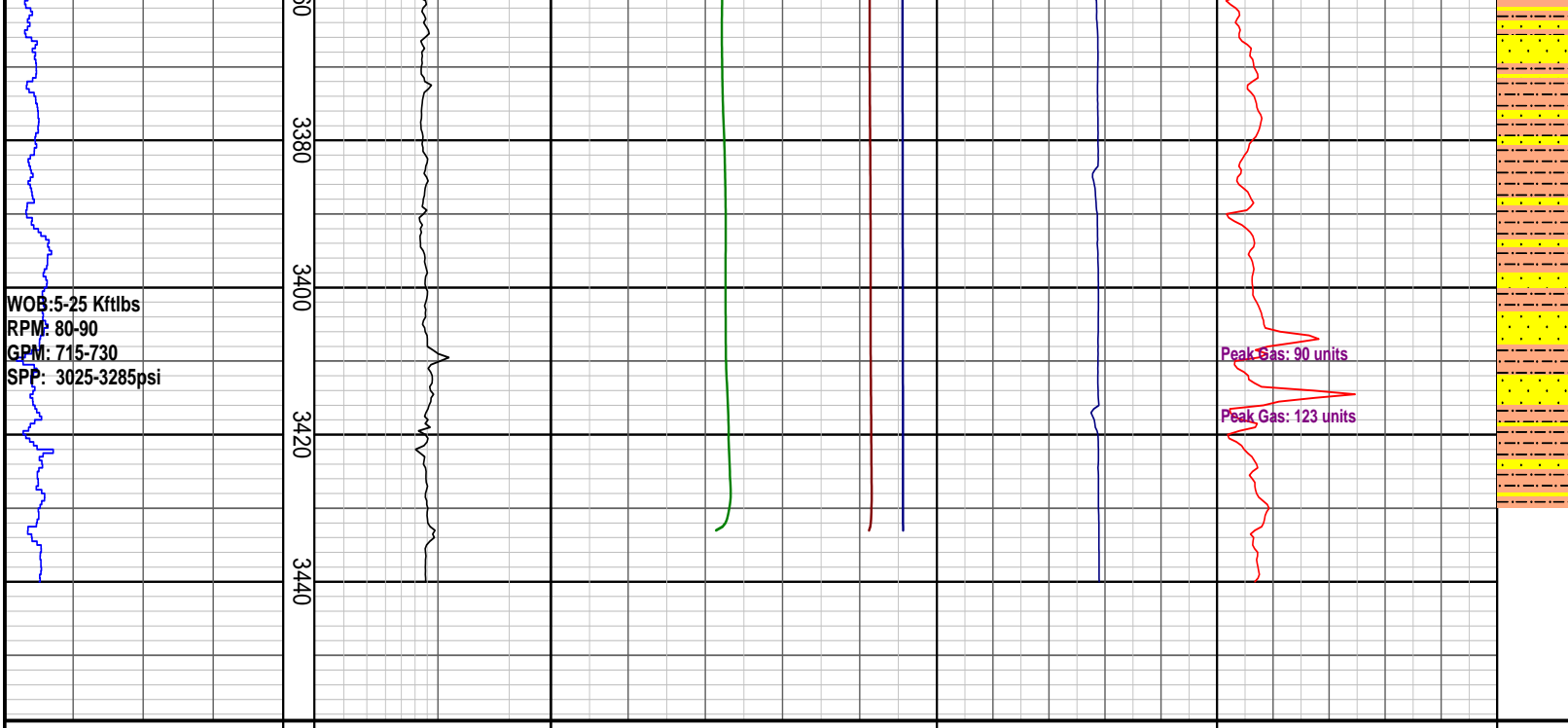
WOB: 8-21 Kftlbs
RPM: 76-147
GPM: 540-767
SPP: 1890-3145psi

WOB: 11-22 Kftlbs
RPM: 78-99
GPM: 718-736
SPP: 2550-2946psi

WOB: 13-31 Kftlbs
RPM: 78-82
GPM: 715-720
SPP: 2870-3065psi

05/01/2009





PRESSURE DATA PLOT

Rate of Penetration ROP m/hr	DRILLING EXPONENT DXC	PRESSURE DATA Pore Pressure ppg	TEMPERATURE Temperature Out degC	GAS Total Gas unit	INTERPRETED LITHOLOGY
50 100 150 200	0.3 3	4 8 12 16 20	20 40 60 80 100	50 100 150 200 250	
		Fracture Pressure 4 8 12 16 20 ppg			
		Overburden Gradient 4 8 12 16 20 ppg			